

CLAY BARN WINTER EXHIBITION

'Finishing Touches'

Friday 24 - Monday 27 November 2017 · all welcome · free entry · open 10-4

Louise Darby - *ceramics and photography* - opens her studio for the second of her two 2017 exhibitions, with seven exhibitors; Tamsin, Valerie and Kate are returning artists, and she introduces Rob, Sarah and Victoria - artists new to Clay Barn. All are contemporary masters of their own skills; they attend during the exhibition to talk to you about their work, and some are able to demonstrate aspects of their making process. Find out how it is created, giving each of your unique purchases their own story whether for yourself or as a gift. Clay Barn is a welcoming friendly venue, with many a temptation!

Valerie Mead - *jewellery* - makes a collection of easily wearable elegant contemporary jewellery with clean and simple lines, in silver with touches of warm rose gold, inspired by observations of architectural details. She often lightly textures the silver surfaces, adding tiny rose gold rivets and wires to highlight her designs - with relief, focus and colour; and incorporates freshwater pearls and precious stones to further enrich a piece of work. Valerie also enjoys making individually designed jewellery in gold or silver to commission, for engagement and wedding rings and other special pieces.

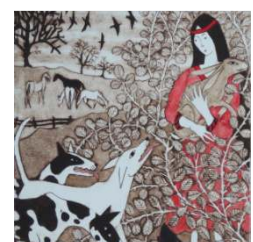
Tamsin Abbott - *illustrated leaded glass* - is inspired by the countryside, its myths, fairytales and our ancient connections to the landscape, as well as by her material - the glass itself. Tamsin uses ready coloured glass, cuts and assembles her multicoloured 'canvas'; coating it with matt glass paint, she then scrapes through this, working in the negative, to achieve an effect like a woodcut. She creates detailed illustrative designs, revealing and working with the 'grain' and colours of the glass below; a chapter in each leaded 'pane' of glass, the whole becoming a window on a story, all enhanced by light.

Rob Braybrooks - *birch monochromes* - explores light, reflection, shadow, contrasting tones, backlit landforms and foreground details in silhouette, capturing everyday wildlife encounters. Combining his artist's eye and designer's technical skill he creates his images using two simple media - light birch wood, contrasted against dark painted surfaces. Your mind's eye is free to create its own perspective, shapes become forms, and spaces recognisable places. He pares his subject matter down to the essential details, cutting the birch wood by hand, the negative space making his unique pictures.

Sarah Beadsmoore - *handwoven textiles* - finds great pleasure in the basic simplicity of making cloth. "I enjoy the interlacing of two sets of threads (the warp and weft) to form the soft fluidity of a scarf or the firmness and durability required to produce upholstery fabric." Colours are a great inspiration to Sarah - and their interaction as they are woven together. She dyes the silk thread herself - 'it is a wonderful vehicle for many completely different colour ranges.' Her designs - a process of evolution, drawing on inspiration from other cultures and artistic media. Watch Sarah weaving during the exhibition weekend.

Kate Risdale - *metal sculpture* - Inspired by animals around her, Kate's unique making process has been likened to "drawing in steel". Her art has a light, fluid sensitivity despite the seemingly unyielding nature of the medium. Combining industrial/elemental techniques and her intuitive and anatomical knowledge of her subjects, she captures movement and instils life into her work; from vigorous life size animals to decorative and imaginative wall candle sconces. Complementing her work, Kate runs art and sculpture courses for schools, and youth and community groups.

Victoria Keeble - *printmaking* - uses several printmaking techniques including: etching, screen-printing, collagraph, wood engraving and linocut to create her exquisite limited edition work, new to Clay Barn. Always fascinated by the shapes and patterns of animals and birds, and mythical beasts, Victoria combines real with imagined, creating quirky associations. She incorporates her love of pattern and texture, stylisation and fluidity of line in her illustrative designs. Her subject matter is often influenced by classic legends, sometimes sparked by a poem or fairy tales, a chance remark or just 'out of the blue'.



The Exhibition is to be held at Clay Barn - for further information please contact

Louise Darby Clay Barn Redhill Alcester Warwickshire B49 6NQ 01789 765 214

louisedarby@louisedarby.co.uk www.louisedarby.co.uk