

## CLAY BARN EXHIBITION

**June 5 – 8 2009 - only 4 days - Open 10 till 5**  
Clay Barn • Redhill • Alcester • Warwickshire • B49 6NQ  
4 miles west of Stratford-upon-Avon on the A46 behind The Stag Pub

All are welcome to this exhibition over a long weekend, free entry, with ongoing demonstrations by several of the attending artists. Four of the six artists -Tamsin Abbott, Carry Akroyd, Sheila Davies and Beatrice Hoffman are exhibiting at this beautiful workshop and garden venue for the first time, joining Louise Darby, resident potter and photographer, and Oxford jeweller Valerie Mead.



**Louise Darby:** *ceramics & photography*

Exhibitor and host, Louise brings together another exciting collection of artists whose works so intuitively complement her own; design elements and inspirational sources similar to those important to her ceramic work and continue as themes in her photography. Alongside her finely thrown stoneware and porcelain Louise is exhibiting some photographs from her latest travels, along the mighty Mekong River of Indochina.

**Tamsin Abbott:** *Illustrated leaded glass*

Tamsin is influenced by myths, her materials and the Herefordshire countryside around her home - orchards, woods and their plants, birds and animals. Using ready coloured glass Tamsin cuts and assembles her multicoloured 'canvas', coating it with matt glass paint; she then scrapes through this, working in the negative to achieve an effect like a woodcut, creating her illustrative designs, revealing and working with the 'grain' and colours of the glass below, all enhanced by light.

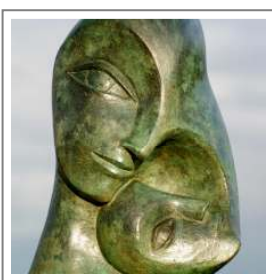
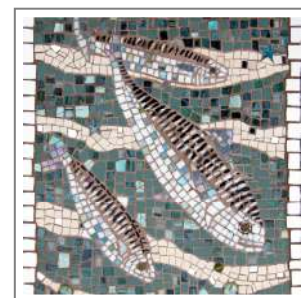


**Carry Akroyd:** *Painting and Printmaking*

Carry exhibits her original paintings and limited edition prints throughout the UK, and is a member of the Society of Wildlife Artists. Field patterns are a persistent theme in her work, where history, agriculture and wildlife collide. From adventures with colour through painting and many printmaking techniques, Carry sometimes diverts into the discipline of black and white linocuts, with striking results. She will be showing a full range of work here and demonstrating at intervals over the weekend.

**Sheila Davies:** *Mosaic Artist*

Sheila creates contemporary mosaics using anything from traditional mosaic tesserae, broken china, beads, wire, or whatever suits a particular piece. Each mosaic is unique, with quirky elements to be found in every one. Sheila works to her own design and to commissions, for the home and garden, and will show us a part of this time consuming process whilst exhibiting at Clay Barn.



**Beatrice Hoffman:** *Sculpture*

Beatrice sculpts her larger than life, stylized figures and heads in clay, building the forms with coils of clay or more recently on a copper pipe armature, from which a mould is made and limited edition casts taken in bronze or bronze resin. Her pieces are made for the garden and home. Beatrice will demonstrate sculpting during the exhibition weekend.

**Valerie Mead:** *Jewellery*

Valerie designs and makes elegant and wearable contemporary jewellery in silver and gold. New pieces are added each year to a collection of finely textured silver jewellery which features tiny details in warm rose gold, with freshwater pearls and stones. Inspiration for her clean cut designs often comes from observations of architectural and man-made items; simplicity of line is the aim.



**We do hope that you will be able to come along, meet the artists, and enjoy this welcoming venue.**

The Exhibition is to be held at Clay Barn – for further information please contact  
Louise Darby - Clay Barn, Redhill, Alcester, Warwickshire, B49 6NQ  
01789 765 214 - [louisedarby@louisedarby.co.uk](mailto:louisedarby@louisedarby.co.uk) - [www.louisedarby.co.uk](http://www.louisedarby.co.uk)