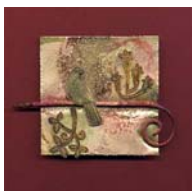


# We Warmly Welcome You and Your Friends to our CHRISTMAS EXHIBITION at Clay Barn Redhill near Stratford upon Avon

## ‘Landscape and Wildlife’

23 – 26 November 2007      Open 10 till 4

Refreshments, including wine from C.A.Rookes of Stratford upon Avon



**Louise Darby** hosts and exhibits in her annual Christmas exhibition, presenting a collection of her photographic studies from landscape and wildlife taken in Namibia and the Galápagos Islands. She will also be showing her finely thrown white stoneware ceramics, including incised and carved wildlife designs. For this exhibition she is rejoined by James Fotheringhame, Rachel Higgins and Sharon McSwiney, and new to Clay Barn are Martin Andrews and Barbara Fidoe.

glass combine with fluidity as if each piece is still molten. Using the finest crystal based glass Martin designs, hand makes and signs his work, no two items are ever identical. Making for twelve years his work is exhibited and sold internationally.

**Barbara Fidoe's** luxurious velvet and silk devoré wall hangings, panels and scarves are individually painted and silk screened by hand, building and taking away layers in response to landscape, visual memories of simplicity, harmony and colour. Her fabrics carry the richness of dyes giving the impression of depth and structure to the cloth. Barbara is an award winning artist selling her work internationally.

**James Fotheringhame** is always exploring innovative techniques, now using acrylics with watercolours creating translucency and immediacy with texture. His work breathes the informed enthusiasm James has for his choice of natural subjects. ‘My creative journey through painting takes me to seek richness in a seemingly opposite environment to my garden design work, mainly on the coastline.’

**Rachel Higgins's** metal sculpture and automata capture the essence of her subjects - from life size bug to beast - with poise and presence. Rachel ‘draws’ with copper, brass, and silver wires, and stainless steel for larger pieces. The linear structure is then defined with various metal sheet meshes adding form, colour and texture, with details of enamel to highlight a beak or brighten an eye.

**Sharon McSwiney** makes silver, copper and brass jewellery and metalwork. Her whimsical creatures, often in their landscape, are richly embellished using applied, etched and punched pattern, heat and chemical colouration and patina, with highlights of silver. Each piece is an individual as technique and constant seeking for new inspiration dictates, rich in texture and colour.

Clay Barn is a delightfully informal and welcoming venue and with Christmas not so far away it is a perfect opportunity to find that special something for you family and friends, meet the artists and enjoy this wonderfully diverse collection of exceptional talent.

**Clay Barn is behind The Stag Pub on the A46, 4 miles west of Stratford**

**For further details:**

Louise Darby Clay Barn Redhill Alcester Warwickshire B49 6NQ

T: 01789 765214    E: [louisedarby@louisedarby.co.uk](mailto:louisedarby@louisedarby.co.uk)